

CAMELLE

PROPERTY



1/1-3 Thornleigh St Thornleigh NSW

- Excellent Street Front Exposure
- Ground Floor unit
- Immaculate Space
- Large Showroom Area
- 3 Enclosed Offices
- 2 Open Plan Offices
- Staff Room
- Kitchenette
- Amenities
- 200m from Thornleigh Station
- Just off Pennant Hills Rd

Building Size : 146 sqm
View : <https://www.camelle.com.au/sale/nsw/northern-suburbs/thornleigh/commercial/offices/7062265>

Please note, Level 1 is also for sale, the levels can be purchased separately or together.

The above information has been furnished to us by the Owner. We have not verified whether or not that



Janine Best
02 9476 5222

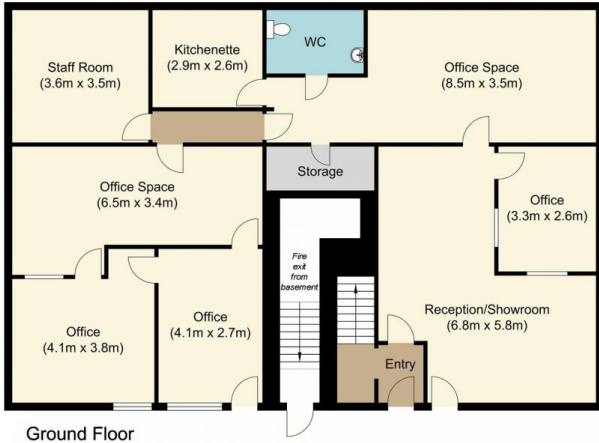


Murray Byrnes
0412 765 222

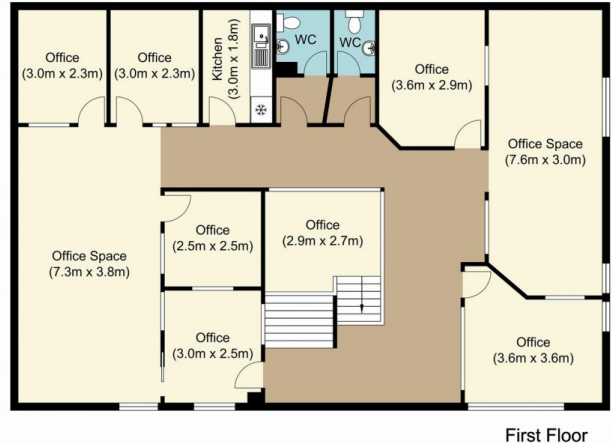


1-3 Thornleigh Street, Thornleigh

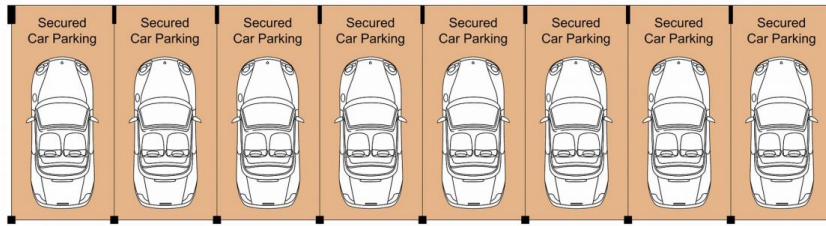
INTERNAL FLOOR AREA 303m²
SECURE CAR PARKING AREA 118m²
TOTAL AREA 421m²



Ground Floor



First Floor



Basement



Disclaimer:
Drawing not to scale. Please note that while the information contained in this floorplan is provided by reliable sources, we cannot guarantee its accuracy. It is intended as a guide. Interested parties should rely on their own enquiry.